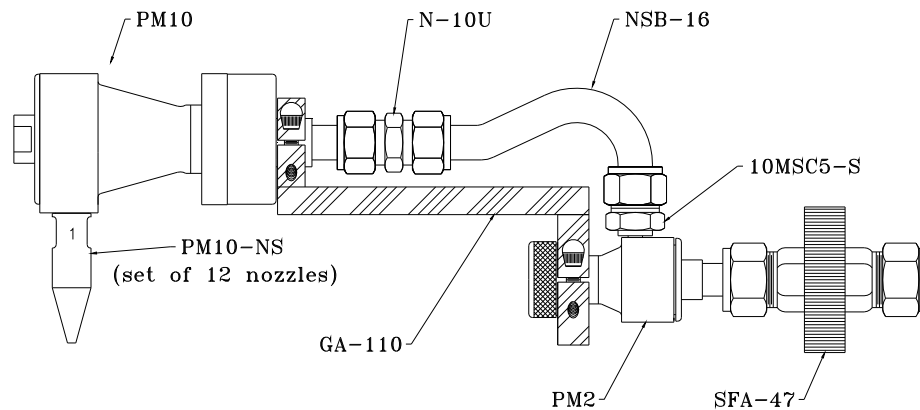
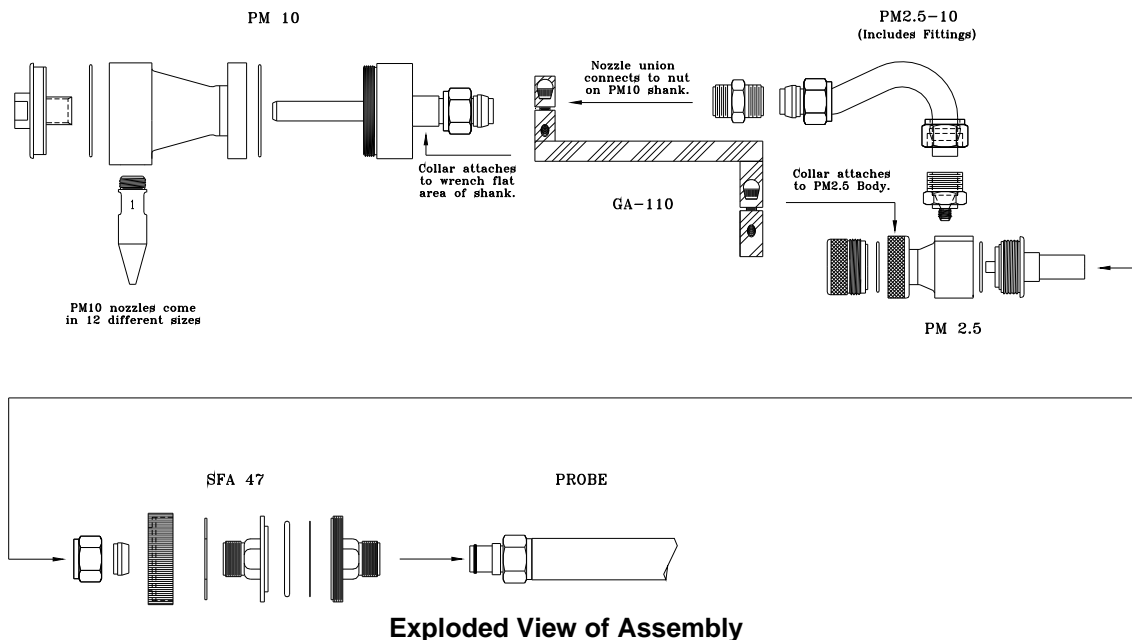


Simultaneous PM10 and PM2.5 10B Cyclone Sampling Kit

The Apex Instruments PM10 and PM2.5 configuration is attached to the standard Method 5 probe and must be used in conjunction with the extended pitot tip which is sold separately. This method applies to the in-stack measurement of particulate matter equal to or less than an aerodynamic diameter of nominally 10 (PM10) and 2.5 (PM2.5) micrometer from stationary sources. The EPA recognizes that condensable emissions not collected by an in-stack method are also PM10, and that emissions that contribute to ambient PM10 levels are the sum of condensable emissions and emissions measured by an in-stack PM10 method, such as Method 201A.



The PM10 serves as the sampling head followed by the PM2.5 that are attached using the PM2.5-10 gooseneck nozzle. The combined cyclones are then mounted on a 47mm Stainless Steel Filter that is then attached to the end of the Standard Method 5 probe.



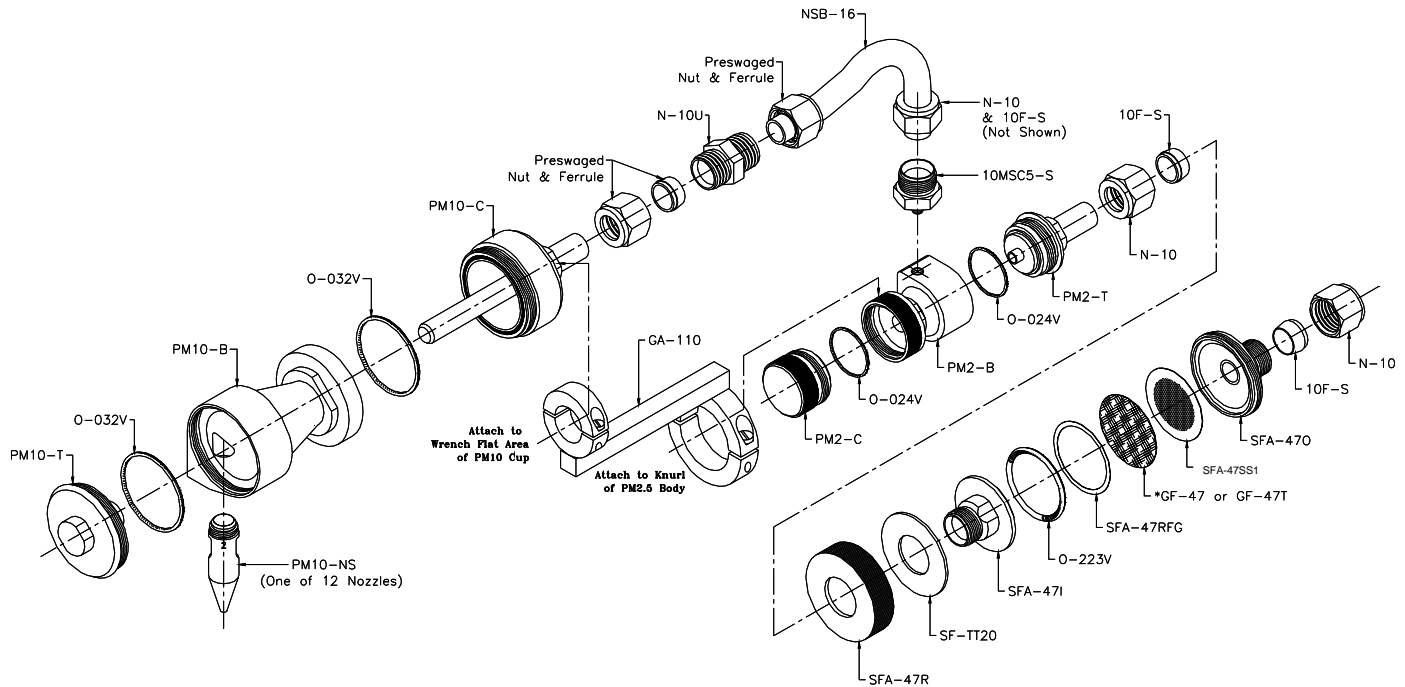
Exploded View of Assembly

Simultaneous PM10 and PM2.5 10K17,18 Cyclone Kit
PM2.5-10K 17&18 - Packing List

PM2.5-10K17,18 includes:			
Part #	Description	Quantity	Qty Shipped
PM10 <i>Includes:</i>	PM10 Cyclone Body Only, SS, Method 201A	1	
	PM10-B Cyclone Body	1	
	PM10-C Collection Cup	1	
	PM10-T Cap	1	
	O-032V Viton O-ring for PM10 Cyclone	6	
PM10-NS <i>Includes:</i>	Nozzles, Set of 12 for PM10 Cyclone	1	
	PM10-N0 Nozzle, PM10, SS, .125 Size 0	1	
	PM10-N1 Nozzle, PM10, SS, .136 Size 1	1	
	PM10-N2 Nozzle, PM10, SS, .150 Size 2	1	
	PM10-N3 Nozzle, PM10, SS, .164 Size 3	1	
	PM10-N4 Nozzle, PM10, SS, .180 Size 4	1	
	PM10-N5 Nozzle, PM10, SS, .197 Size 5	1	
	PM10-N6 Nozzle, PM10, SS, .215 Size 6	1	
	PM10-N7 Nozzle, PM10, SS, .233 Size 7	1	
	PM10-N8 Nozzle, PM10, SS, .264 Size 8	1	
	PM10-N9 Nozzle, PM10, SS, .300 Size 9	1	
	PM10-N10 Nozzle, PM10, SS, .342 Size 10	1	
	PM10-N11 Nozzle, PM10, SS, .390 Size 11	1	
PM2 <i>Includes:</i>	PM2.5 Cyclone Body Only, SS	1	
	PM2-B Cyclone Body	1	
	PM2-C Collection Cup	1	
	PM2-T Top, Outlet for the PM2.5	1	
	O-024V O-ring, Viton, PM2.5	6	
N-10UBNN	Union, 5/8" Body Only, SS, .330" Bored	1	
NSB-16	PM10/2.5 Adapter, Button Hook Adapter	1	
10MSC5-S	PM10-2.5 Connector	1	
GA-110	Adapter, Strain Relief for PM10 and PM2.5 Cyclones	1	
AZNI-4	Anti-Seize, NI, .25 oz Tube	1	
SFA-47	Filter Assembly, 47mm, 5/8 TU, SS w/Viton O-rings	1 (see Doc# Pack-SFA-47)	
PM2.5-10 CS <i>Includes:</i>	Case, PM10-2.5 Kit, w/foam inserts	1	
	SH-50 Case, Plastic, Molded	1	
	PM10-2.5FOAM Foam Insert for Case	1	

Modular Pitot - Sold Separately

MPT-6-425-OFF Extended Pitot Tip, PM2.5-10, SS 1



Exploded View of the PM10 and PM2.5 Combination

Options, Replacement Parts and Accessories	
Part #	Description
MPT-6-425-OFF-WC	Extended Pitot Tip for PM10-2.5 Combination, w/fittings, Offset, Wind Calibrated
O-032V	O-Ring, PM10, Viton (260 °C/500 °F)
O-032H	O-Ring, PM10, Stainless Steel (650 °C/1200 °F)
O-223V	O-Ring, SFA-47, Viton (260 °C/500 °F)
O-223H	O-Ring, SFA-47, Stainless Steel (650 °C/1200 °F)
O-024V	O-Ring, PM 2.5, Viton
O-024H	O-Ring, PM 2.5, Stainless Steel
SF-TT20	Ring, Thrust, SFA-47, Teflon
SFA-47SS1	Screen, Filter Support, 47mm, SS1
SFA-47RFG	Filter Ring Guard, SS
GF-47	Filters, Glass Fiber, 47 mm
GF-47TPG	Filters, PFA/Glass Fiber, 47 mm

Software

Although it is possible to do the setup and data analysis calculations for the PM10 and PM2.5 by hand or with calculators, the number of calculations which must be done to treat the data from just one run make hand calculations impractical. Apex Instruments offers the PM-2.5-10C Particle Sizing Software which provides full support for the PM10 and PM2.5 sampling and analysis.

PM-2.5-10C	Particle Sizing Software for PM10 & PM2.5 Cyclones
------------	--