

# PM2.5 Cyclone Sampling Kit

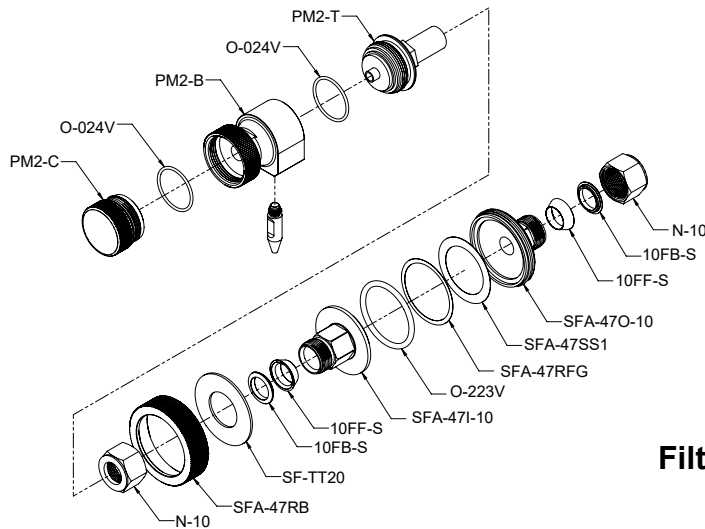
## PM2-K Packing List



Page 1: Cycone Kit Parts List - Stainless Steel Version  
 Page 2: Replacement parts and Accessories  
 Page 3 : Cyclone Kit Parts List - Inconel Version

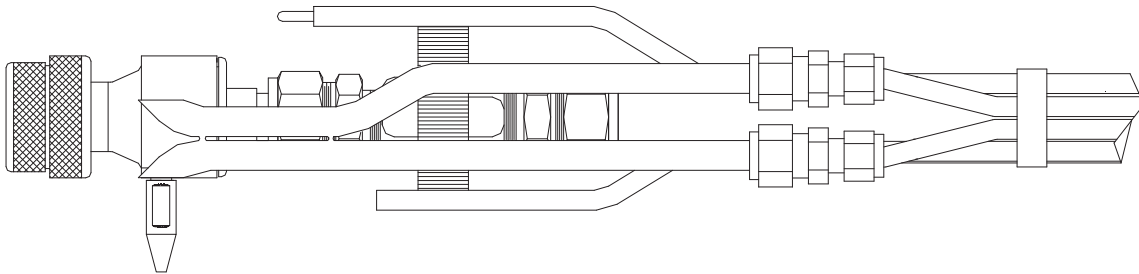
PM2-K Kit Includes				N-10	
Part #	Description		Quantity	Qty Shipped	
PM2	PM2.5 Cyclone Body, SS with Viton O-Rings		1		
<b>Includes:</b>	<b>PM2-C</b>	Collection Cup for PM2.5	1		
	<b>O-024V</b>	O-Ring, Viton, PM2.5 (260°C/500°F)	6		
	<b>PM2-B</b>	Body for the PM2.5 Cyclone	1		
	<b>PM2-T</b>	Top, Outlet for the PM2.5	1		
PM2-NS	Nozzles, Set of 12, PM2.5, SS ( <i>One Nozzle Shown</i> )		1		
<b>Includes:</b>	<b>PM2-N1</b>	Nozzle, PM2, SS, .125 Size 1	1		
	<b>PM2-N2</b>	Nozzle, PM2, SS, .138 Size 2	1		
	<b>PM2-N3</b>	Nozzle, PM2, SS, .156 Size 3	1		
	<b>PM2-N4</b>	Nozzle, PM2, SS, .172 Size 4	1		
	<b>PM2-N5</b>	Nozzle, PM2, SS, .188 Size 5	1		
	<b>PM2-N6</b>	Nozzle, PM2, SS, .200 Size 6	1		
	<b>PM2-N7</b>	Nozzle, PM2, SS, .216 Size 7	1		
	<b>PM2-N8</b>	Nozzle, PM2, SS, .234 Size 8	1		
	<b>PM2-N9</b>	Nozzle, PM2, SS, .253 Size 9	1		
	<b>PM2-N10</b>	Nozzle, PM2, SS, .274 Size 10	1		
	<b>PM2-N11</b>	Nozzle, PM2, SS, .296 Size 11	1		
	<b>PM2-N12</b>	Nozzle, PM2, SS, .320 Size 12	1		
SFA-47	Filter Assembly, 47mm, 5/8TU, SS		1		
<b>Includes:</b>	<b>10FB-S and 10FF-S</b>	Front and Back Ferrules, 5/8TU, SS	2		
	<b>N-10</b>	Nut, 5/8, Tube, SS	2		
	<b>SFA-47RB</b>	Ring, Threaded, SS	1		
	<b>SF-TT20</b>	Thrust Ring, PTFE .062" thick	1		
	<b>SFA-47I-10</b>	Inlet, Filter, SS for SFA-47	1		
	<b>O-223V</b>	O-Ring, Viton for SFA-47 (260°C/500°F)	3		
	<b>SFA-47RFG</b>	Filter, Ring, Guard SS	1		
	<b>SFA-47SS1</b>	Screen, Filter Support, SS	1		
	<b>SFA-47O-10</b>	Outlet, Filter, SS	1		
PM10-CS	Case, PM10 or PM2.5, with Foam Insert, Cyclone		1		
<b>Includes:</b>	<b>SH-32</b>	Case, Plastic, Molded	1		
	<b>PM10-FOAM</b>	Foam Insert	1		
AZNI-4	Anti-Seize, NI, .25 oz Tube		1		

## PM2.5 Cyclone Sampling Kit Exploded Assembly



### SFA-47 Filter Assembly Exploded

The PM2.5 Cyclone is designed for in-stack measurement of particulate matter equal to or less than 2.5 microns. The shank has a 5/8-inch outer diameter for easy adaptation to Method 5 probe assemblies. The cyclone is enclosed in a sturdy foam lined plastic case with the eight nozzles and the SFA-47 (Stainless Steel Filter Holder).



#### Replacement Parts and Accessories:

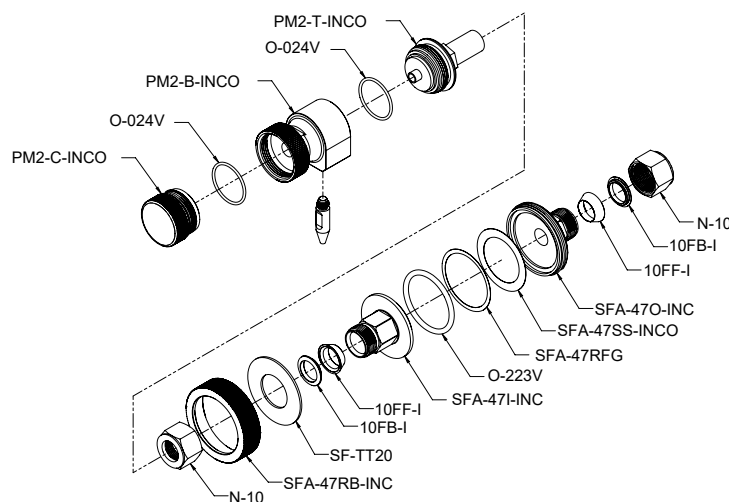
GF-47TGP	47mm TFE Coated Glass Fiber Filters, 100/box
O-223H	O-Ring, Stainless Steel, SFA-47 (650°C/1200°F)
O-024H	O-Ring, Stainless Steel, PM 2.5 (650°C/1200°F)
MPT-6-185-OFF-WC	Extended Pitot Tip for PM 2.5
AZNI-4	Antiseize, Nickel Based, 4-oz can w/brush

**For more information please contact us at:**

Tel: (919) 557-7300 / Fax: (919) 557-7110 / Email: info@apexinst.com / Web: www.apexinst.com

## PM2.5 Inconel Cyclone Sampling Kit

### PM2-K-INCO Packing List



PM2-K-INCO Kit Includes				
Part #	Description		Quantity	Qty Shipped
PM2-INCO	PM2.5 Cyclone Body, SS with Viton O-Rings		1	
<b>Includes:</b>	<b>PM2-C-INCO</b>	Collection Cup for PM2.5	1	
	<b>O-024V</b>	O-Ring, Viton, PM2.5 (260°C/500°F)	6	
	<b>O-024H</b>	O-Ring, Viton, PM2.5 High Temp	2	
	<b>PM2-B-INCO</b>	Body for the PM2.5 Cyclone	1	
	<b>PM2-T-INCO</b>	Top, Outlet for the PM2.5	1	
	<b>10FF-I, 10FB-I</b>	Top, Outlet for the PM2.5	1	
	<b>NI-10N</b>	Nut, 5/8 Tube, Inconel	1	
PM2-NS-INCO	Nozzles, Set of 12, PM2.5, Inconel (One Nozzle Shown)		1	
<b>Includes:</b>	<b>PM2-N1-INCO</b>	Nozzle, PM2, Inconel, .125 Size 1	1	
	<b>PM2-N2-INCO</b>	Nozzle, PM2, Inconel, .138 Size 2	1	
	<b>PM2-N3-INCO</b>	Nozzle, PM2, Inconel, .156 Size 3	1	
	<b>PM2-N4-INCO</b>	Nozzle, PM2, Inconel, .172 Size 4	1	
	<b>PM2-N5-INCO</b>	Nozzle, PM2, Inconel, .188 Size 5	1	
	<b>PM2-N6-INCO</b>	Nozzle, PM2, Inconel, .200 Size 6	1	
	<b>PM2-N7-INCO</b>	Nozzle, PM2, Inconel, .216 Size 7	1	
	<b>PM2-N8-INCO</b>	Nozzle, PM2, Inconel, .234 Size 8	1	
	<b>PM2-N9-INCO</b>	Nozzle, PM2, Inconel, .253 Size 9	1	
	<b>PM2-N10-INCO</b>	Nozzle, PM2, Inconel, .274 Size 10	1	
	<b>PM2-N11-INCO</b>	Nozzle, PM2, Inconel, .296 Size 11	1	
	<b>PM2-N12-INCO</b>	Nozzle, PM2, Inconel, .320 Size 12	1	

Continued on next page...

SFA-47-INCO	Filter Assembly, 47mm, 5/8TU, Inconel		1	
<b>Includes:</b>	<b>SFA-47O-INC</b>	Outlet, Filter, Inconel+	1	
	<b>SFA-47I-INC</b>	Inlet, Filter, Inconel for SFA-47	1	
	<b>SFA-47RFG</b>	Filter, Ring, Guard SS	1	
	<b>SFA-47SS-INCO</b>	Screen, Filter Support, Inconel	1	
	<b>10FB-I and 10FF-I</b>	Front and Back Ferrules, 5/8TU, Inconel	2	
	<b>NI-10N</b>	Nut, 5/8, Tube, Inconel	2	
	<b>SFA-47RB-INC</b>	Ring, Threaded, Inconel	1	
	<b>SF-TT20</b>	Thrust Ring, PTFE .062" thick	1	
	<b>O-223V</b>	O-Ring, Viton for SFA-47 (260°C/500°F)	3	
	<b>O-223H</b>	O-Ring, High Temp for SFA-47	3	
	<b>AZNI-4</b>	Anti-Seize, NI, .25 oz Tube	1	
PM10-CS	Case, PM10 or PM2.5, with Foam Insert, Cyclone		1	
<b>Includes:</b>	<b>SH-32</b>	Case, Plastic, Molded	1	
	<b>PM10-FOAM</b>	Foam Insert	1	
	<b>FAI-1-TOP</b>	Foam, Top	1	