

Stainless Steel Replacement Parts and Accessories

| <i>Part #</i> | <i>Description</i> |
|----------------------|--|
| MPT-6-255-OFF-WC | Extended Pitot Tip for PM10, Offset, Wind Cal. |
| O-032V | O-ring, PM10, Viton (260 °C/500 °F) |
| O-032H | O-ring, PM10, Stainless Steel (650 °C/1200 °F) |
| O-223V | O-ring, SFA-47, Viton (260 °C/500 °F) |
| O-223H | O-ring, SFA-47, Stainless Steel (650 °C/1200 °F) |
| SF-TT20 | Ring, Thrust, SFA-47, Teflon |
| SFA-47SS1 | Screen, Filter Support, 47mm, SS1 |
| GF-47 | Filters, Glass Fiber, 47 mm |
| GF-47QH | Filters, Quartz Fiber, 47 mm |
| GF-47TPG | Filters, PTFE/Glass Fiber, 47 mm |

Inconel Replacement Parts and Accessories

| <i>Part #</i> | <i>Description</i> |
|-----------------------|--|
| MPT-6-255-OFF-WC-INCO | Extended Pitot Tip for PM10, Offset, Wind Cal. |
| O-032V | O-ring, PM10, Viton (260 °C/500 °F) |
| O-032H | O-ring, PM10, Stainless Steel (650 °C/1200 °F) |
| O-223V | O-ring, SFA-47, Viton (260 °C/500 °F) |
| O-223H | O-ring, SFA-47, Stainless Steel (650 °C/1200 °F) |
| SF-TT20 | Ring, Thrust, SFA-47, Teflon |
| SFA-47SS-INCO | Screen, Filter Support, 47mm, Inconel |
| GF-47 | Filters, Glass Fiber, 47 mm |
| GF-47QH | Filters, Quartz Fiber, 47 mm |
| GF-47TPG | Filters, PTFE/Glass Fiber, 47 mm |

Breakaway Bracket Hardware

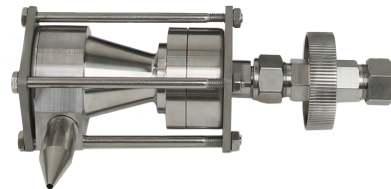
| | |
|---------|--------------------|
| PM10-BB | PM10 Back Bracket |
| PM10-FB | PM10 Front Bracket |
| HD3230 | PM10 Bracket Bolt |

PM10-NT-K for the Determination of PM10 Emissions

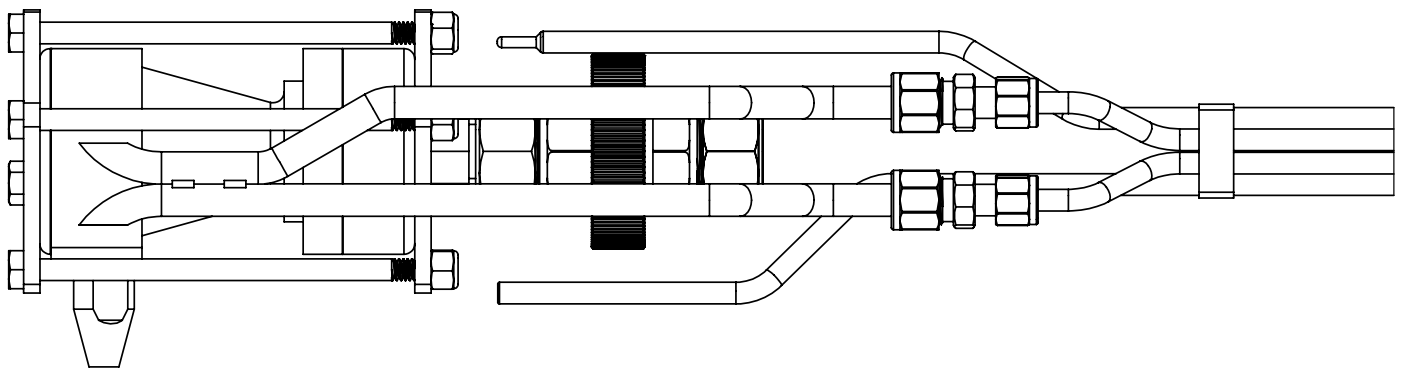
The PM10 Cyclone is built to USEPA specifications for Method 201A testing and is designed for in-stack measurement of particulate matter equal to or less than 10 microns. The shank has a 5/8-inch outer diameter for easy adaptation to method 5 probe assemblies. The cyclone and twelve nozzles are enclosed in a sturdy, foam-lined, plastic case.

The durable stainless steel construction makes this cyclone ideal for high temperatures up to 260°C (500°F). We also have the stainless steel O-rings available for high-temperature conditions.

Our high temperature version of the product, made of alloy 600, is recommended for temperature up to 871° (1600 °F)

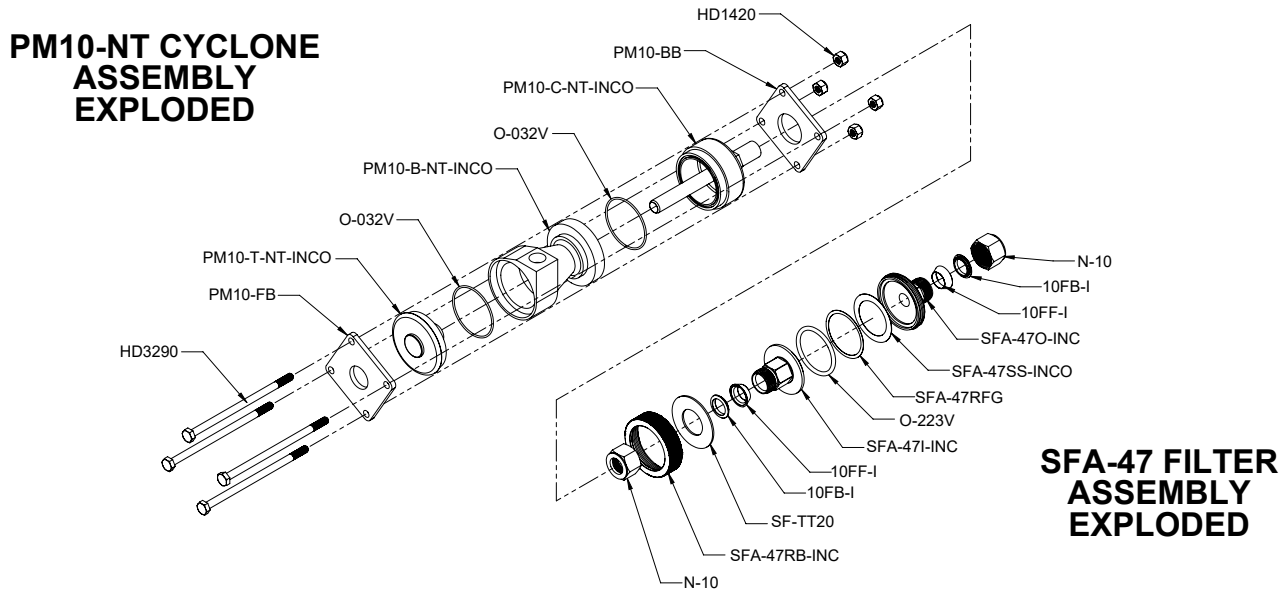


The non-threaded assembly, also known as breakaway style, is constructed with bolt-together rather than screw together and is used for higher temperatures (up to 1000°F). The breakaway uses expendable stainless steel bolts that can be over-torqued and broken if necessary to release cyclone closures, thus allowing you to recover PM without damaging the cyclone flanges or contaminating the samples.



PM10-NT-K assembled on probe.

PM10 Inconel Breakaway Cyclone Assembly PM10-K-INCO Packing List



SFA-47 FILTER ASSEMBLY EXPLODED

PM10-K-INCO includes:

| Part # | Description | Quantity | Qty Shipped |
|------------------|--|------------------------------------|-------------|
| PM10-INCO | PM10 Cyclone Body Only, Inconel, Method 201A | 1 | |
| Includes: | | | |
| | PM10-B-NT-INCO Cyclone Body | 1 | |
| | PM10-C-NT-INCO Collection Cup | 1 | |
| | PM10-T-NT-INCO Cap | 1 | |
| | O-032V Viton O-ring for PM10 Cyclone | 6 | |
| PM10-NI | Nozzles, Set of 12 for PM10 Cyclone | 1 | |
| Includes: | | | |
| | PM10-N0-INCO Nozzle, PM10, Inconel, .125 Size 0 | 1 | |
| | PM10-N1-INCO Nozzle, PM10, Inconel, .136 Size 1 | 1 | |
| | PM10-N2-INCO Nozzle, PM10, Inconel, .150 Size 2 | 1 | |
| | PM10-N3-INCO Nozzle, PM10, Inconel, .164 Size 3 | 1 | |
| | PM10-N4-INCO Nozzle, PM10, Inconel, .180 Size 4 | 1 | |
| | PM10-N5-INCO Nozzle, PM10, Inconel, .197 Size 5 | 1 | |
| | PM10-N6-INCO Nozzle, PM10, Inconel, .215 Size 6 | 1 | |
| | PM10-N7-INCO Nozzle, PM10, Inconel, .233 Size 7 | 1 | |
| | PM10-N8-INCO Nozzle, PM10, Inconel, .264 Size 8 | 1 | |
| | PM10-N9-INCO Nozzle, PM10, Inconel, .300 Size 9 | 1 | |
| | PM10-N10-INCO Nozzle, PM10, Inconel, .342 Size 10 | 1 | |
| | PM10-N11-INCO Nozzle, PM10, Inconel, .390 Size 11 | 1 | |
| SFA-47-INCO | Filter Assembly, 47mm, 5/8 TU, Inconel w/Viton O-rings | 1 (see SFA-47 Packing List) | |
| PM10-CS | Case, PM10 or PM2.5, with Foam insert | 1 | |
| Includes: | | | |
| | SH-32 Case, Plastic, Molded | 1 | |
| | PM10-FOAM Foam Insert for Case | 1 | |
| AZNI-4 | Anti-Seize, NI, .25 oz tube | 1 | |